



# MATTHEW OESTREICH

Wood County Auditor | Wood County, Ohio

## Summary

Parcel Number T68-300-790202008000  
 Map Number 300-7902  
 Location Address 500 RIVERSIDE DR  
 Acres 1.832  
 Legal Description EAGLE POINT COLONY INLOT 53  
 (Note: Not to be used on legal documents.)  
 Land Use 510 - Single family Dwlg  
 (Note: Land Use is for valuation purposes only. Consult the local jurisdiction for zoning and legal use..)  
 Neighborhood 00604 - Rossford- Riverside  
 City Rossford City  
 Township Rossford City  
 School District Rossford EVSD  
 Homestead Reduction: No  
 Owner Occupancy Yes  
 Credit:  
 Foreclosure No  
 Board of Revision No

## Owners

Owner TREMONTI GREGORY A  
 Tax Payer Address TREMONTI GREGORY A  
 500 RIVERSIDE DR  
 ROSSFORD OH 43460

## Valuation

Assessed Year	2020	2019	2018	2017	2016
Land Value	\$326,700	\$326,700	\$326,700	\$326,700	\$343,000
CAUV Value	\$0	\$0	\$0	\$0	\$0
Improvements Value	\$696,500	\$644,900	\$644,900	\$644,900	\$621,300
<b>Total Value (Appraised 100%)</b>	<b>\$1,023,200</b>	<b>\$971,600</b>	<b>\$971,600</b>	<b>\$971,600</b>	<b>\$964,300</b>
Land Value	\$114,350	\$114,350	\$114,350	\$114,350	\$120,050
CAUV Value	\$0	\$0	\$0	\$0	\$0
Improvements Value	\$243,780	\$225,720	\$225,720	\$225,720	\$217,460
<b>Total Value (Assessed 35%)</b>	<b>\$358,130</b>	<b>\$340,070</b>	<b>\$340,070</b>	<b>\$340,070</b>	<b>\$337,510</b>

## Land

Land Type	Calculated Acres	Actual Frontage	Effective Frontage	Depth	Depth Factor	Base Rate	Unit Rate	Adjusted Rate	Appraised Value (100%)
L1 - Regular Lot	1.832	200	200	399	121%	600	600	726	\$326,700
<b>Total</b>	<b>1.8320</b>								<b>\$326,700</b>

## Dwellings

Card	1	Exterior Wall	Brick
Number of Stories	2	Heating	Base
Style	Conventional	Cooling	None
Year Built	1918	Basement	Full Basement
Year Remodeled	0	Attic	None
Rooms	13	Finished Living Area	9600
Bedrooms	5	First Floor Area	4800
Full Baths	4	Upper Floor Area	4800
Half Baths	3	Half Floor Area	0
Family Rooms	0	Finished Basement Area	0
Dining Rooms	0	Total Basement Area	4800
Basement Garages	0	Attic Area	0
Condition	Average	Fireplace Openings	6
Fireplace Stacks	6		

## Additions

### Card 1

Addition Code	Description	Base Area	Year Built
PT1	Patio Concrete	472	0
PT1	Patio Concrete	2,624	0
BL1	Balcony Open	24	0
BL1	Balcony Open	24	0
PR4	Porch Masonry - Enclosed	144	0

## Improvements

### Card 1

Improvement Code	Description	Length	Width	Total Area	Year Built	Appraised Value (100%)
10	Garage Brick	44	12	528	1918	\$820
<b>Total</b>						<b>\$820</b>

## Sales

Sale Date	Sale Price	Seller	Buyer	No. Of Properties	Land Only Sale	Deed Type	Conveyance Number
10/4/2004	\$605,000	MABRE II LTD	TREMONTI GREGORY A	1	N	1	2315
2/9/2004	\$0	MOORJANI GULAB I TRUSTEE	MABRE II LTD	1	N	2	184
9/1/1993	\$0		MOORJANI GULAB I TRUSTEE	1	N		1245

## Recent Sales In Area

Sale date range:

From:

12/08/2018

To:

12/08/2021

Sales by Neighborhood

1500

Feet



Sales by Distance

## Tax History

*Delinquent payments made after the fall due date will still show due in the year they were originally assessed. If paid, payment will show in the next tax year.*

### Detail:

Tax Year	Type	Description	Amount
2020 Pay 2021	Property Tax Detail	1st half tax	\$11,912.17
2020 Pay 2021	Special Assessment Detail	LIGHTING ROSSFORD 1st half SPA fee	\$2.24
2020 Pay 2021	Special Assessment Detail	LIGHTING ROSSFORD 1st half tax	\$223.96
2020 Pay 2021	Special Assessment Detail	SNOW REMOVAL ROSSFORD 1st half tax	\$0.00
2020 Pay 2021	Property Tax Detail	2nd half tax	\$11,912.17
2020 Pay 2021	Special Assessment Detail	LIGHTING ROSSFORD 2nd half SPA fee	\$2.24
2020 Pay 2021	Special Assessment Detail	LIGHTING ROSSFORD 2nd half tax	\$223.95
2019 Pay 2020	Property Tax Detail	1st half tax	\$12,008.75
2019 Pay 2020	Special Assessment Detail	LIGHTING ROSSFORD 1st half SPA fee	\$2.31
2019 Pay 2020	Special Assessment Detail	LIGHTING ROSSFORD 1st half tax	\$231.17
2019 Pay 2020	Special Assessment Detail	SNOW REMOVAL ROSSFORD 1st half tax	\$0.00
2019 Pay 2020	Property Tax Detail	2nd half tax	\$12,008.75
2019 Pay 2020	Special Assessment Detail	LIGHTING ROSSFORD 2nd half SPA fee	\$2.31
2019 Pay 2020	Special Assessment Detail	LIGHTING ROSSFORD 2nd half tax	\$231.16

2018 Pay 2019	Property Tax Detail	1st half tax	\$11,359.15
2018 Pay 2019	Special Assessment Detail	DELQ UTILITY NWSD 1st half SPA fee	\$1.53
2018 Pay 2019	Special Assessment Detail	LIGHTING ROSSFORD 1st half SPA fee	\$2.26
2018 Pay 2019	Special Assessment Detail	DELQ UTILITY NWSD 1st half tax	\$153.06
2018 Pay 2019	Special Assessment Detail	LIGHTING ROSSFORD 1st half tax	\$226.15
2018 Pay 2019	Special Assessment Detail	SNOW REMOVAL ROSSFORD 1st half tax	\$0.00
2018 Pay 2019	Property Tax Detail	2nd half tax	\$11,359.15
2018 Pay 2019	Special Assessment Detail	DELQ UTILITY NWSD 2nd half SPA fee	\$1.53
2018 Pay 2019	Special Assessment Detail	LIGHTING ROSSFORD 2nd half SPA fee	\$2.26
2018 Pay 2019	Special Assessment Detail	DELQ UTILITY NWSD 2nd half tax	\$153.06
2018 Pay 2019	Special Assessment Detail	LIGHTING ROSSFORD 2nd half tax	\$226.14
2017 Pay 2018	Property Tax Detail	1st half tax	\$11,299.10
2017 Pay 2018	Special Assessment Detail	LIGHTING ROSSFORD 1st half SPA fee	\$2.25
2017 Pay 2018	Special Assessment Detail	LIGHTING ROSSFORD 1st half tax	\$225.16
2017 Pay 2018	Special Assessment Detail	SNOW REMOVAL ROSSFORD 1st half tax	\$0.00
2017 Pay 2018	Property Tax Detail	2nd half tax	\$11,299.10
2017 Pay 2018	Special Assessment Detail	LIGHTING ROSSFORD 2nd half SPA fee	\$2.25
2017 Pay 2018	Special Assessment Detail	LIGHTING ROSSFORD 2nd half tax	\$225.16

Total: Tax Year	Amount
2020 Pay 2021	\$24,276.73
2019 Pay 2020	\$24,484.45
2018 Pay 2019	\$23,484.29
2017 Pay 2018	\$23,053.02

#### Treasurer's Tax Bill

[Tax Bill](#)

[Tax Details](#)

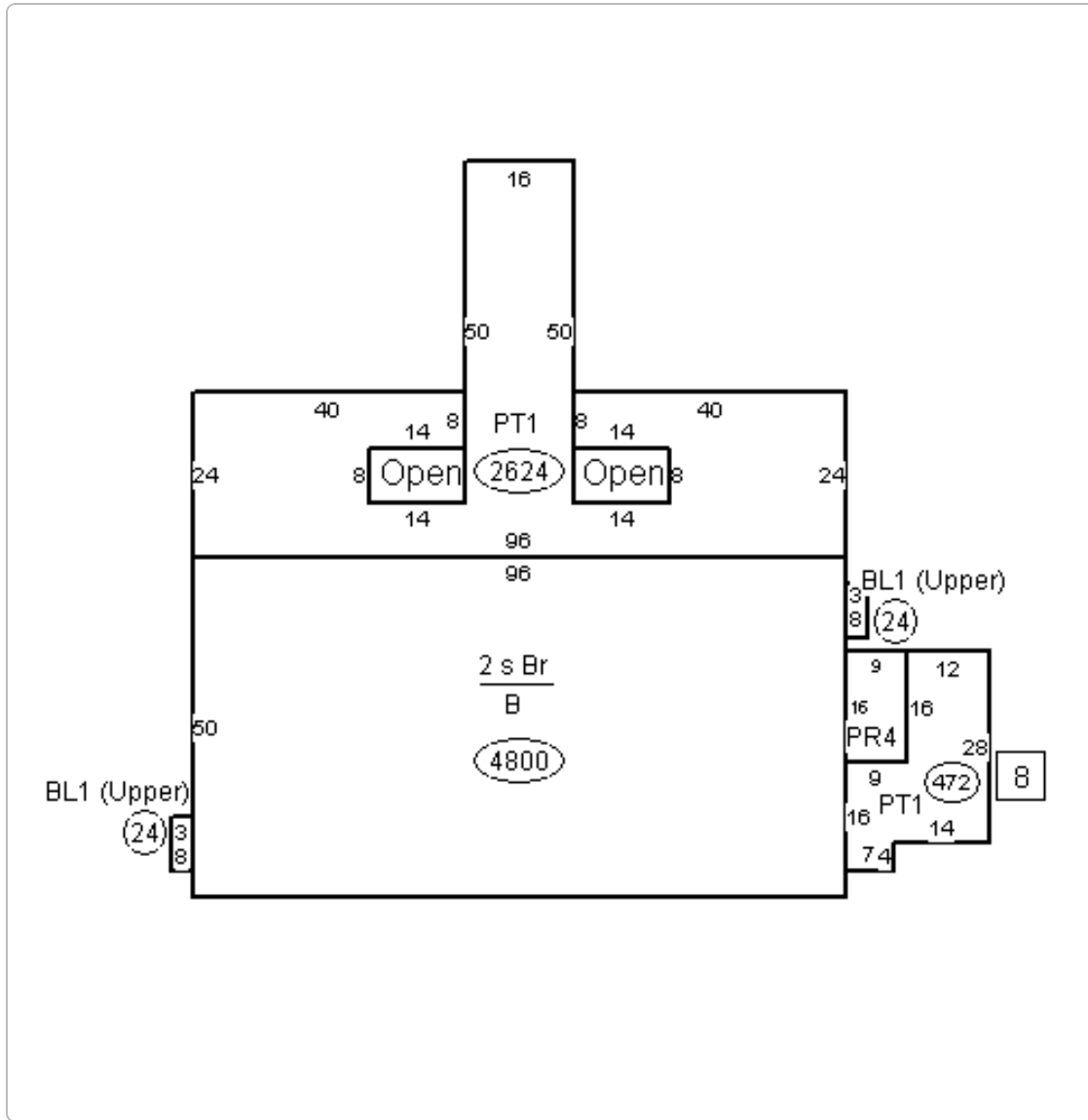
Get a copy of your tax bill and tax distribution. *Will direct user to the Treasurer website.*

#### Payments

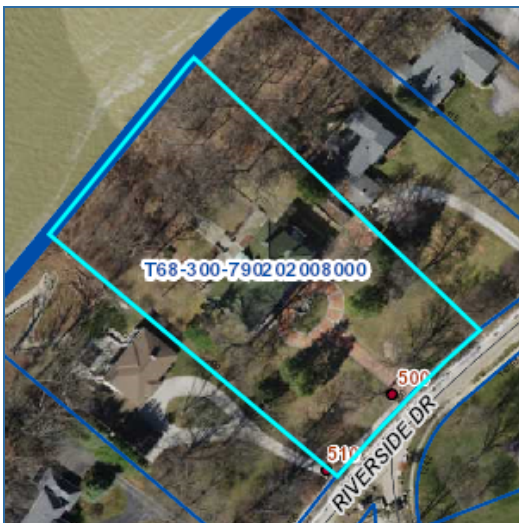
Detail: Tax Year	Payment Date	Paid By	Amount
2020 Pay 2021	7/6/2021	ACHCORELOGIC	\$12,138.36
2020 Pay 2021	2/5/2021	ACH CORELOGIC	\$12,138.37
2019 Pay 2020	7/6/2020	ACHCORELOGIC2	\$12,242.22
2019 Pay 2020	2/6/2020	CORELOGIC	\$12,242.23
2018 Pay 2019	6/26/2019	corelogic	\$11,742.14
2018 Pay 2019	2/7/2019	corelogic36	\$11,742.15
2017 Pay 2018	6/21/2018	corelogic	\$11,526.51
2017 Pay 2018	1/25/2018	corelogic inc	\$11,526.51

Total: Tax Year	Amount
2020 Pay 2021	\$24,276.73
2019 Pay 2020	\$24,484.45
2018 Pay 2019	\$23,484.29
2017 Pay 2018	\$23,053.02

#### Sketches



Map



No data available for the following modules: Ag Soil, Buildings.

The information provided by Wood County is provided 'as is' and for reference only. The user expressly agrees that the use of Wood County's web site is at the user's sole risk. Wood County does not warrant that the service will be uninterrupted or error free. Any information published on this server could contain technical inaccuracies or typographical errors. Changes may be made periodically to the tax laws, administrative rules, tax releases and similar materials;

[User Privacy Policy](#)  
[GDPR Privacy Notice](#)

[Last Data Upload: 12/8/2021, 2:46:07 AM](#)

Version 2.3.164

Developed by  
 **Schneider**  
GEO SPATIAL