



# MATTHEW OESTREICH

Wood County Auditor | Wood County, Ohio

## Summary

Parcel Number B07-511-300139007000  
 Map Number 511-3001  
 Location Address 207 ADA AVE  
 Acres 0.1377  
 Legal Description INLOT 1078  
 Land Use 510 - Single family Dwlg  
 Neighborhood 00202 - BG- E of Main  
 City Bowling Green City  
 Township Bowling Green City  
 School District Bowling Green CSD  
 Homestead Reduction: No  
 Owner Occupancy Yes  
 Credit:  
 Foreclosure No  
 Board of Revision No

*(Note: Not to be used on legal documents.)*  
*(Note: Land Use is for valuation purposes only. Consult the local jurisdiction for zoning and legal use..)*

## Owners

Tax Payer Address  
 CALLEN DONALD M  
 207 ADA AVE  
 BOWLING GREEN OH 43402

Owner  
 CALLEN DONALD M

## Land

Land Type	Calculated Acres	Actual Frontage	Effective Frontage	Depth	Depth Factor	Base Rate	Unit Rate	Adjusted Rate	Appraised Value (100%)
L1 - Regular Lot	0.1377	50	50	120	90%	500	500	450	\$22,500
<b>Total</b>	<b>0.1377</b>								<b>\$22,500</b>

## Dwellings

Card		Exterior Wall	Frame/Siding
Number of Stories	2	Heating	Base
Style	Conventional	Cooling	Central
Year Built	1900	Basement	Crawl
Year Remodeled	0	Attic	Full Finished
Rooms	7	Finished Living Area	1622
Bedrooms	2	First Floor Area	876
Full Baths	1	Upper Floor Area	660
Half Baths	0	Half Floor Area	0
Family Rooms	0	Finished Basement Area	0
Dining Rooms	1	Total Basement Area	0
Basement Garages	0	Attic Area	86
Condition	Average	Fireplace Openings	0
Fireplace Stacks	0		

## Additions

### Card 1

Addition Code	Description	Base Area	Year Built
PR1	Porch Frame - Open	105	0

## Improvements

### Card 1

Improvement Code	Description	Length	Width	Total Area	Year Built	Appraised Value (100%)
15	Shop Frame	16	12	192	1900	\$650
<b>Total</b>						<b>\$650</b>

## Sales

Sale Date	Sale Price	Seller	Buyer	No. Of Properties	Land Only Sale	Deed Type	Conveyance Number
6/20/1989	\$45,500		CALLEN DONALD M	1	N		1078

## Recent Sales In Area

Sale date range:

From:

07/22/2017

To:

07/22/2020

Sales by Neighborhood

1500

Feet

Sales by Distance

## Valuation

Assessed Year	2019	2018	2017	2016	2015
Land Value	\$22,500	\$22,500	\$22,500	\$23,600	\$23,600
CAUV Value	\$0	\$0	\$0	\$0	\$0
Improvements Value	\$56,100	\$56,100	\$56,100	\$42,800	\$42,800
<b>Total Value (Appraised 100%)</b>	<b>\$78,600</b>	<b>\$78,600</b>	<b>\$78,600</b>	<b>\$66,400</b>	<b>\$66,400</b>
Land Value	\$7,880	\$7,880	\$7,880	\$8,260	\$8,260
CAUV Value	\$0	\$0	\$0	\$0	\$0
Improvements Value	\$19,640	\$19,640	\$19,640	\$14,980	\$14,980
<b>Total Value (Assessed 35%)</b>	<b>\$27,520</b>	<b>\$27,520</b>	<b>\$27,520</b>	<b>\$23,240</b>	<b>\$23,240</b>

## Tax History

*Delinquent payments made after the fall due date will still show due in the year they were originally assessed. If paid, payment will show in the next tax year.*

Detail:

Tax Year	Type	Description	Amount	Bal Due
2019 Pay 2020	Property Tax Detail	1st half penalty	\$61.32	\$61.32
2019 Pay 2020	Property Tax Detail	December interest	\$11.18	\$11.18
2019 Pay 2020	Property Tax Detail	Prior year penalty	\$60.97	\$60.97
2019 Pay 2020	Property Tax Detail	1st half tax	\$613.15	\$613.15
2019 Pay 2020	Property Tax Detail	Prior year tax	\$609.66	\$609.66
2019 Pay 2020	Special Assessment Detail	ST CLEANING BG EAST 1st half SPA fee	\$0.14	\$0.14
2019 Pay 2020	Special Assessment Detail	ST CLEANING BG EAST Prior year SPA fee	\$0.14	\$0.14
2019 Pay 2020	Special Assessment Detail	ST CLEANING BG EAST 1st half penalty	\$1.37	\$1.37
2019 Pay 2020	Special Assessment Detail	ST CLEANING BG EAST 1st half SPA fee penalty	\$0.01	\$0.01
2019 Pay 2020	Special Assessment Detail	ST CLEANING BG EAST December interest	\$0.25	\$0.25
2019 Pay 2020	Special Assessment Detail	ST CLEANING BG EAST Prior year penalty	\$1.35	\$1.35
2019 Pay 2020	Special Assessment Detail	ST CLEANING BG EAST Prior year SPA fee penalty	\$0.01	\$0.01
2019 Pay 2020	Special Assessment Detail	ST CLEANING BG EAST 1st half tax	\$13.73	\$13.73
2019 Pay 2020	Special Assessment Detail	ST CLEANING BG EAST Prior year tax	\$13.51	\$13.51
2019 Pay 2020	Property Tax Detail	2nd half tax	\$613.15	\$613.15
2019 Pay 2020	Special Assessment Detail	ST CLEANING BG EAST 2nd half SPA fee	\$0.14	\$0.14
2019 Pay 2020	Special Assessment Detail	ST CLEANING BG EAST 2nd half tax	\$13.72	\$13.72
2018 Pay 2019	Property Tax Detail	1st half tax	\$609.66	\$0.00
2018 Pay 2019	Special Assessment Detail	ST CLEANING BG EAST 1st half SPA fee	\$0.14	\$0.00
2018 Pay 2019	Special Assessment Detail	ST CLEANING BG EAST 1st half tax	\$13.52	\$0.00
2018 Pay 2019	Property Tax Detail	2nd half penalty	\$60.97	\$60.97
2018 Pay 2019	Property Tax Detail	2nd half tax	\$609.66	\$609.66
2018 Pay 2019	Special Assessment Detail	ST CLEANING BG EAST 2nd half SPA fee	\$0.14	\$0.14
2018 Pay 2019	Special Assessment Detail	ST CLEANING BG EAST 2nd half penalty	\$1.35	\$1.35
2018 Pay 2019	Special Assessment Detail	ST CLEANING BG EAST 2nd half SPA fee penalty	\$0.01	\$0.01
2018 Pay 2019	Special Assessment Detail	ST CLEANING BG EAST 2nd half tax	\$13.51	\$13.51
2017 Pay 2018	Property Tax Detail	1st half tax	\$602.55	\$0.00
2017 Pay 2018	Special Assessment Detail	ST CLEANING BG EAST 1st half SPA fee	\$0.13	\$0.00
2017 Pay 2018	Special Assessment Detail	ST CLEANING BG EAST 1st half tax	\$13.36	\$0.00
2017 Pay 2018	Property Tax Detail	2nd half tax	\$602.55	\$0.00

2017 Pay 2018	Special Assessment Detail	ST CLEANING BG EAST 2nd half SPA fee	\$0.13	\$0.00
2017 Pay 2018	Special Assessment Detail	ST CLEANING BG EAST 2nd half tax	\$13.35	\$0.00

<b>Total:</b>			
<b>Tax Year</b>	<b>Amount</b>	<b>Bal Due</b>	
2019 Pay 2020	\$2,013.80	\$2,013.80	
2018 Pay 2019	\$1,308.96	\$685.64	
2017 Pay 2018	\$1,232.07	\$0.00	

### Treasurer's Tax Bill



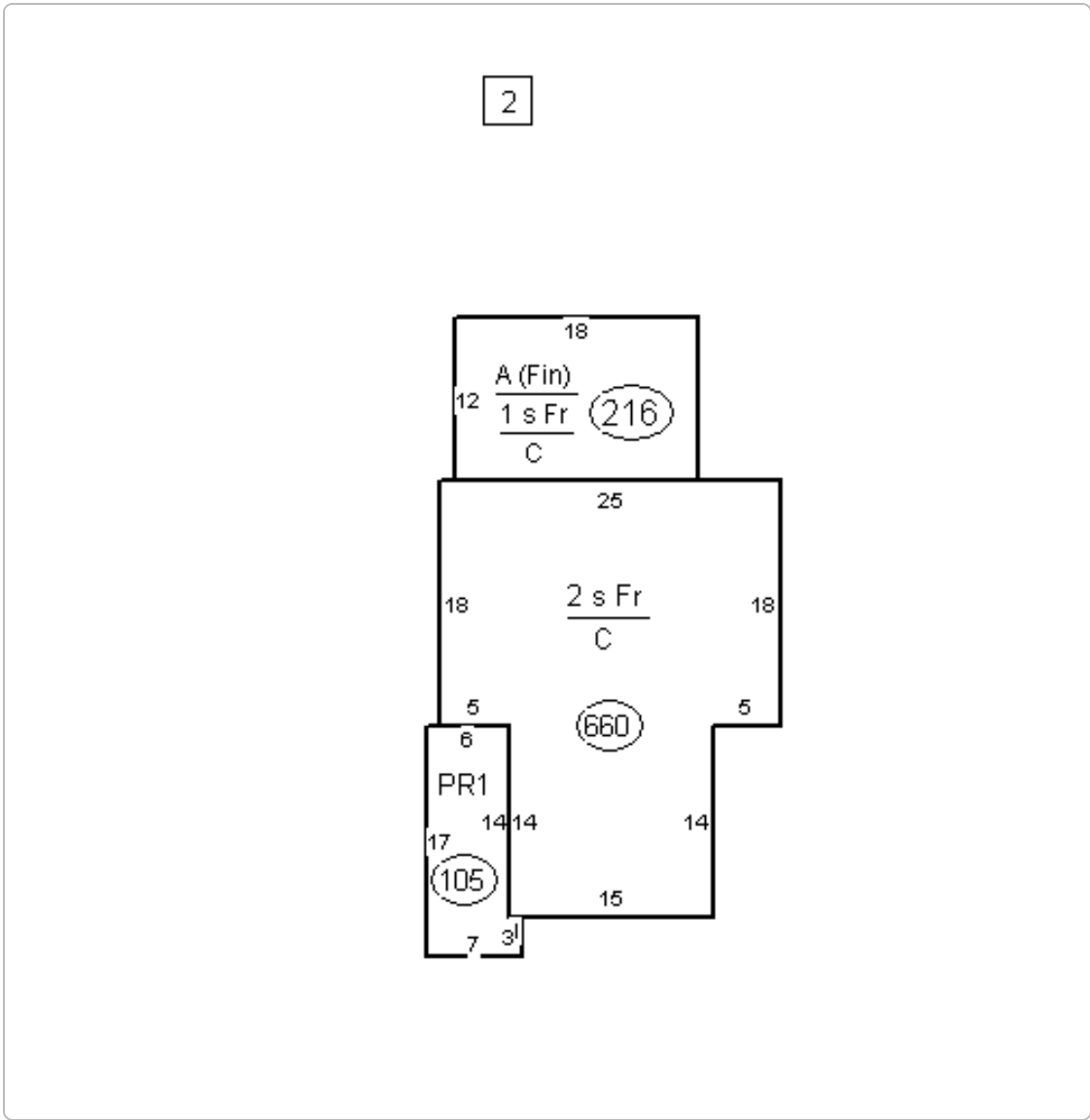
Get a copy of your tax bill and tax distribution. *Will direct user to the Treasurer website.*

### Payments

<b>Detail:</b>			
<b>Tax Year</b>	<b>Payment Date</b>	<b>Paid By</b>	<b>Amount</b>
2018 Pay 2019	2/7/2019	OCR	\$623.32
2017 Pay 2018	6/20/2018	OCR	\$616.03
2017 Pay 2018	2/5/2018	OCR	\$616.04

<b>Total:</b>		
<b>Tax Year</b>	<b>Amount</b>	
2018 Pay 2019	\$623.32	
2017 Pay 2018	\$1,232.07	

### Sketches



Map



No data available for the following modules: Ag Soil, Buildings.

The information provided by Wood County is provided 'as is' and for reference only. The user expressly agrees that the use of Wood County's web site is at the user's sole risk. Wood County does not warrant that the service will be uninterrupted or error free. Any information published on this server could contain technical inaccuracies or typographical errors. Changes may be made periodically to the tax laws, administrative rules, tax releases and similar materials;

[User Privacy Policy](#)  
[GDPR Privacy Notice](#)

[Last Data Upload: 7/22/2020, 8:22:21 PM](#)

[Version 2.3.71](#)

Developed by  
 Schneider  
GEOSPATIAL