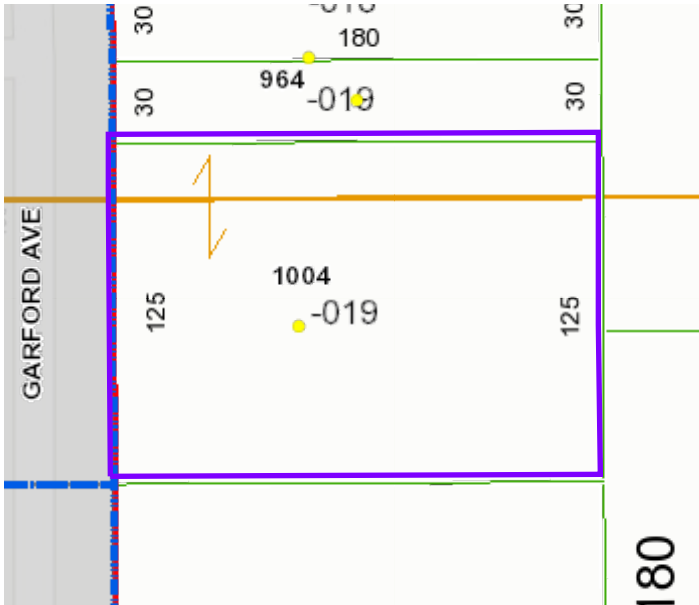




Lorain County Auditor
Craig Snodgrass, CPA, CGFM

Report generated: Tue Jan 02 2018

Parcel Number: 0625004114019



Parcels

Parcel Number	0625004114019	Land Use	510
Owner	KILFOYLE WILLIAM E	Neighborhood	80100 - EASTERN HTS
Location Address	1004 GARFORD AVE ELYRIA, OH 44035	Acres	0
Tax Bill Mailed To	46488 HUGH ROAD OBERLIN, OH 44074	School District	ELYRIA CSD
Property Description		Instrument Number	
Tax District	33 - ELYRIA CITY/ELYRIA CSD	Delinquent Real Estate	No

Values

Market Land Value	\$41,690.00
Market Building Value	\$125,940.00
Market Total Value	\$167,630.00
Market CAUV	\$0.00
Market Abatement	\$0.00
Assessed Land Value	\$14,590.00
Assessed Building Value	\$44,080.00
Assessed Total Value	\$58,670.00
Assessed CAUV	\$0.00
Assessed Abatement	\$0.00

These 2016 values have been certified by the State of Ohio.

Taxes

Gross Full Year Tax	\$5,861.26	Special Assessment	\$306.00
State Credit	\$1,713.72	Delinquent Special Assessment	\$0.00
Subtotal	\$ 4,147.54	Unpaid Taxes	\$0.00
Non-Business Credit	\$374.24	Total Taxes Owed	\$3,620.46
Owner Occupancy Credit	\$93.56	Total Taxes Paid	\$1,565.47
Homestead Credit	\$548.80	Special Assessments	N
Net Tax	\$3,130.94		

Your 2016 taxes were certified on January 6, 2017. The full year tax includes all unpaid taxes and special assessments. Tax amounts may be verified through the Lorain County Treasurer's Office at (440) 329-5787. Mortgage Companies and Title Representatives must request tax information via USPS during tax collection periods.

Sales

Sale Date	Sale Amount	Conveyance	Grantor	Grantee	Number of Parcels
12/27/2016	\$0.00	2016094866	KILFOYLE MARCELLA	KILFOYLE WILLIAM	1
7/13/2012	\$0.00	2012092295	KILFOYLE MARCELLA	KILFOYLE WILLIAM	1
7/13/2012	\$0.00	2012092296	KILFOYLE WILLIAM	KILFOYLE MARCELLA	1
2/4/2008	\$0.00	2008090449	KILFOYLE MARCELLA M & WILLIAM E	KILFOYLE MARCELLA	1
1/8/2008	\$0.00	2008090095	KILFOYLE MARCELLA	KILFOYLE MARCELLA M & WILLIAM E	1

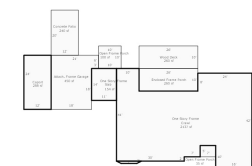
Residential

Parcel Number	0625004114019	Half Bath	1
Year Built	1950	Fireplace	Yes
Finished Sqft	2,300	Basement	No
Total Rooms	6	Crawl Space	Yes
Bedrooms	2	Slab	Yes
Full Bath	2	Central AC	Yes

Photo



Sketch



Conveyance

Line	Station	Distance	Time	Remarks
1	Station 1	0.0	0:00	Start of trip
2	Station 2	0.5	0:05	Arrived at Station 2
3	Station 3	1.0	0:10	Arrived at Station 3
4	Station 4	1.5	0:15	Arrived at Station 4
5	Station 5	2.0	0:20	Arrived at Station 5
6	Station 6	2.5	0:25	Arrived at Station 6
7	Station 7	3.0	0:30	Arrived at Station 7
8	Station 8	3.5	0:35	Arrived at Station 8
9	Station 9	4.0	0:40	Arrived at Station 9
10	Station 10	4.5	0:45	Arrived at Station 10
11	Station 11	5.0	0:50	Arrived at Station 11
12	Station 12	5.5	0:55	Arrived at Station 12
13	Station 13	6.0	1:00	Arrived at Station 13
14	Station 14	6.5	1:05	Arrived at Station 14
15	Station 15	7.0	1:10	Arrived at Station 15
16	Station 16	7.5	1:15	Arrived at Station 16
17	Station 17	8.0	1:20	Arrived at Station 17
18	Station 18	8.5	1:25	Arrived at Station 18
19	Station 19	9.0	1:30	Arrived at Station 19
20	Station 20	9.5	1:35	Arrived at Station 20
21	Station 21	10.0	1:40	Arrived at Station 21
22	Station 22	10.5	1:45	Arrived at Station 22
23	Station 23	11.0	1:50	Arrived at Station 23
24	Station 24	11.5	1:55	Arrived at Station 24
25	Station 25	12.0	2:00	Arrived at Station 25
26	Station 26	12.5	2:05	Arrived at Station 26
27	Station 27	13.0	2:10	Arrived at Station 27
28	Station 28	13.5	2:15	Arrived at Station 28
29	Station 29	14.0	2:20	Arrived at Station 29
30	Station 30	14.5	2:25	Arrived at Station 30
31	Station 31	15.0	2:30	Arrived at Station 31
32	Station 32	15.5	2:35	Arrived at Station 32
33	Station 33	16.0	2:40	Arrived at Station 33
34	Station 34	16.5	2:45	Arrived at Station 34
35	Station 35	17.0	2:50	Arrived at Station 35
36	Station 36	17.5	2:55	Arrived at Station 36
37	Station 37	18.0	3:00	Arrived at Station 37
38	Station 38	18.5	3:05	Arrived at Station 38
39	Station 39	19.0	3:10	Arrived at Station 39
40	Station 40	19.5	3:15	Arrived at Station 40
41	Station 41	20.0	3:20	Arrived at Station 41
42	Station 42	20.5	3:25	Arrived at Station 42
43	Station 43	21.0	3:30	Arrived at Station 43
44	Station 44	21.5	3:35	Arrived at Station 44
45	Station 45	22.0	3:40	Arrived at Station 45
46	Station 46	22.5	3:45	Arrived at Station 46
47	Station 47	23.0	3:50	Arrived at Station 47
48	Station 48	23.5	3:55	Arrived at Station 48
49	Station 49	24.0	4:00	Arrived at Station 49
50	Station 50	24.5	4:05	Arrived at Station 50
51	Station 51	25.0	4:10	Arrived at Station 51
52	Station 52	25.5	4:15	Arrived at Station 52
53	Station 53	26.0	4:20	Arrived at Station 53
54	Station 54	26.5	4:25	Arrived at Station 54
55	Station 55	27.0	4:30	Arrived at Station 55
56	Station 56	27.5	4:35	Arrived at Station 56
57	Station 57	28.0	4:40	Arrived at Station 57
58	Station 58	28.5	4:45	Arrived at Station 58
59	Station 59	29.0	4:50	Arrived at Station 59
60	Station 60	29.5	4:55	Arrived at Station 60
61	Station 61	30.0	5:00	Arrived at Station 61
62	Station 62	30.5	5:05	Arrived at Station 62
63	Station 63	31.0	5:10	Arrived at Station 63
64	Station 64	31.5	5:15	Arrived at Station 64
65	Station 65	32.0	5:20	Arrived at Station 65
66	Station 66	32.5	5:25	Arrived at Station 66
67	Station 67	33.0	5:30	Arrived at Station 67
68	Station 68	33.5	5:35	Arrived at Station 68
69	Station 69	34.0	5:40	Arrived at Station 69
70	Station 70	34.5	5:45	Arrived at Station 70
71	Station 71	35.0	5:50	Arrived at Station 71
72	Station 72	35.5	5:55	Arrived at Station 72
73	Station 73	36.0	6:00	Arrived at Station 73
74	Station 74	36.5	6:05	Arrived at Station 74
75	Station 75	37.0	6:10	Arrived at Station 75
76	Station 76	37.5	6:15	Arrived at Station 76
77	Station 77	38.0	6:20	Arrived at Station 77
78	Station 78	38.5	6:25	Arrived at Station 78
79	Station 79	39.0	6:30	Arrived at Station 79
80	Station 80	39.5	6:35	Arrived at Station 80
81	Station 81	40.0	6:40	Arrived at Station 81
82	Station 82	40.5	6:45	Arrived at Station 82
83	Station 83	41.0	6:50	Arrived at Station 83
84	Station 84	41.5	6:55	Arrived at Station 84
85	Station 85	42.0	7:00	Arrived at Station 85
86	Station 86	42.5	7:05	Arrived at Station 86
87	Station 87	43.0	7:10	Arrived at Station 87
88	Station 88	43.5	7:15	Arrived at Station 88
89	Station 89	44.0	7:20	Arrived at Station 89
90	Station 90	44.5	7:25	Arrived at Station 90
91	Station 91	45.0	7:30	Arrived at Station 91
92	Station 92	45.5	7:35	Arrived at Station 92
93	Station 93	46.0	7:40	Arrived at Station 93
94	Station 94	46.5	7:45	Arrived at Station 94
95	Station 95	47.0	7:50	Arrived at Station 95
96	Station 96	47.5	7:55	Arrived at Station 96
97	Station 97	48.0	8:00	Arrived at Station 97
98	Station 98	48.5	8:05	Arrived at Station 98
99	Station 99	49.0	8:10	Arrived at Station 99
100	Station 100	49.5	8:15	Arrived at Station 100
101	Station 101	50.0	8:20	Arrived at Station 101
102	Station 102	50.5	8:25	Arrived at Station 102
103	Station 103	51.0	8:30	Arrived at Station 103
104	Station 104	51.5	8:35	Arrived at Station 104
105	Station 105	52.0	8:40	Arrived at Station 105
106	Station 106	52.5	8:45	Arrived at Station 106
107	Station 107	53.0	8:50	Arrived at Station 107
108	Station 108	53.5	8:55	Arrived at Station 108
109	Station 109	54.0	9:00	Arrived at Station 109
110	Station 110	54.5	9:05	Arrived at Station 110
111	Station 111	55.0	9:10	Arrived at Station 111
112	Station 112	55.5	9:15	Arrived at Station 112
113	Station 113	56.0	9:20	Arrived at Station 113
114	Station 114	56.5	9:25	Arrived at Station 114
115	Station 115	57.0	9:30	Arrived at Station 115
116	Station 116	57.5	9:35	Arrived at Station 116
117	Station 117	58.0	9:40	Arrived at Station 117
118	Station 118	58.5	9:45	Arrived at Station 118
119	Station 119	59.0	9:50	Arrived at Station 119
120	Station 120	59.5	9:55	Arrived at Station 120
121	Station 121	60.0	10:00	Arrived at Station 121
122	Station 122	60.5	10:05	Arrived at Station 122
123	Station 123	61.0	10:10	Arrived at Station 123
124	Station 124	61.5	10:15	Arrived at Station 124
125	Station 125	62.0	10:20	Arrived at Station 125
126	Station 126	62.5	10:25	Arrived at Station 126
127	Station 127	63.0	10:30	Arrived at Station 127
128	Station 128	63.5	10:35	Arrived at Station 128
129	Station 129	64.0	10:40	Arrived at Station 129
130	Station 130	64.5	10:45	Arrived at Station 130
131	Station 131	65.0	10:50	Arrived at Station 131
132	Station 132	65.5	10:55	Arrived at Station 132
133	Station 133	66.0	11:00	Arrived at Station 133
134	Station 134	66.5	11:05	Arrived at Station 134
135	Station 135	67.0	11:10	Arrived at Station 135
136	Station 136	67.5	11:15	Arrived at Station 136
137	Station 137	68.0	11:20	Arrived at Station 137
138	Station 138	68.5	11:25	Arrived at Station 138
139	Station 139	69.0	11:30	Arrived at Station 139
140	Station 140	69.5	11:35	Arrived at Station 140
141	Station 141	70.0	11:40	Arrived at Station 141
142	Station 142	70.5	11:45	Arrived at Station 142
143	Station 143	71.0	11:50	Arrived at Station 143
144	Station 144	71.5	11:55	Arrived at Station 144
145	Station 145	72.0	12:00	Arrived at Station 145
146	Station 146	72.5	12:05	Arrived at Station 146
147	Station 147	73.0	12:10	Arrived at Station 147
148	Station 148	73.5	12:15	Arrived at Station 148
149	Station 149	74.0	12:20	Arrived at Station 149
150	Station 150	74.5	12:25	Arrived at Station 150
151	Station 151	75.0	12:30	Arrived at Station 151
152	Station 152	75.5	12:35	Arrived at Station 152
153	Station 153	76.0	12:40	Arrived at Station 153
154	Station 154	76.5	12:45	Arrived at Station 154
155	Station 155	77.0	12:50	Arrived at Station 155
156	Station 156	77.5	12:55	Arrived at Station 156
157	Station 157	78.0	1:00	Arrived at Station 157
158	Station 158	78.5	1:05	Arrived at Station 158
159	Station 159	79.0	1:10	Arrived at Station 159
160	Station 160	79.5	1:15	Arrived at Station 160
161	Station 161	80.0	1:20	Arrived at Station 161
162	Station 162	80.5	1:25	Arrived at Station 162
163	Station 163	81.0	1:30	Arrived at Station 163
164	Station 164	81.5	1:35	Arrived at Station 164
165	Station 165	82.0	1:40	Arrived at Station 165
166	Station 166	82.5	1:45	Arrived at Station 166
167	Station 167	83.0	1:50	Arrived at Station 167
168	Station 168	83.5	1:55	Arrived at Station 168
169	Station 169	84.0	2:00	Arrived at Station 169
170	Station 170	84.5	2:05	Arrived at Station 170
171	Station 171	85.0	2:10	Arrived at Station 171
172	Station 172	85.5	2:15	Arrived at Station 172
173	Station 173	86.0	2:20	Arrived at Station 173
174	Station 174	86.5	2:25	Arrived at Station 174
175	Station 175	87.0	2:30	Arrived at Station 175
176	Station 176	87.5	2:35	Arrived at Station 176
177	Station 177	88.0	2:40	Arrived at Station 177
178	Station 178	88.5	2:45	Arrived at Station 178
179	Station 179	89.0	2:50	Arrived at Station 179
180	Station 180	89.5	2:55	Arrived at Station 180
181	Station 181	90.0	3:00	Arrived at Station 181
182	Station 182	90.5	3:05	Arrived at Station 182
183	Station 183	91.0	3:10	Arrived at Station 183
184	Station 184	91.5	3:15	Arrived at Station 184
185	Station 185	92.0	3:20	Arrived at Station 185
186	Station 186	92.5	3:25	Arrived at Station 186
187	Station 187	93.0	3:30	Arrived at Station 187
188	Station 188	93.5	3:35	Arrived at Station 188
189	Station 189	94.0	3:40	Arrived at Station 189
190	Station 190	94.5	3:45	Arrived at Station 190
191	Station 191	95.0	3:50	Arrived at Station 191
192	Station 192	95.5	3:55	Arrived at Station 192
193	Station 193	96.0	4:00	Arrived at Station 193
194	Station 194	96.5	4:05	Arrived at Station 194
195	Station 195	97.0	4:10	Arrived at Station 195
196	Station 196	97.5	4:15	Arrived at Station 196
197	Station 197	98.0	4:20	Arrived at Station 197
198	Station 198	98.5	4:25	Arrived at Station 198
199	Station 199	99.0	4:30	Arrived at Station 199
200	Station 200	99.5	4:35	Arrived at Station 200
201	Station 201	100.0	4:40	Arrived at Station 201
202	Station 202	100.5	4:45	Arrived at Station 202
203	Station 203	101.0	4:50	Arrived at Station 203
204	Station 204	101.5	4:55	Arrived at Station 204
205	Station 205	102.0	5:00	Arrived at Station 205
206	Station 206	102.5	5:05	Arrived at Station 206
207	Station 207	103.0	5:10	Arrived at Station 207
208	Station 208	103.5	5:15	Arrived at Station 208
209	Station 209	104.0	5:20	Arrived at Station 209
210	Station 210	104.5	5:25	Arrived at Station 210
211	Station 211	105.0	5:30	Arrived at Station 211
212	Station 212	105.5	5:35	Arrived at Station 212
213	Station 213	106.0	5:40	Arrived at Station 213
214	Station 214	106.5	5:45	Arrived at Station 214
215	Station 215	107.0	5:50	Arrived at Station 215
216	Station 216	107.5	5:55	Arrived at Station 216
217	Station 217	108.0	6:00	Arrived at Station 217
218	Station 218	108.5	6:05	Arrived at Station 218
219	Station 219	109.0	6:10	Arrived at Station 219
220	Station 220	109.5	6:15	Arrived at Station 220
221	Station 221	110.0	6:20	Arrived at Station 221
222	Station 222	110.5	6:25	Arrived at Station 222
223	Station 223	111.0	6:30	Arrived at Station 223
224	Station 224	111.5	6:35	Arrived at Station 224
225	Station 225	112.0	6:40	Arrived at Station 225
226	Station 226	112.5	6:45	Arrived at Station 226
227	Station 227	113.0	6:50	Arrived at Station 227
228	Station 228	113.5	6:55	Arrived at Station 228
229	Station 229	114.0	7:00	Arrived at Station 229
230	Station 230	114.5	7:05	Arrived at Station 230
231	Station 231	115.0	7:10	Arrived at Station 231
232	Station 232	115.5	7:15	Arrived at Station 232
233	Station 233	116.0	7:20	Arrived at Station 233
234	Station 234	116.5	7:25	Arrived at Station 234
235	Station 235	117.0	7:30	Arrived at Station 235
236	Station 236	117.5	7:35	Arrived at Station 236
237	Station 237	118.0	7:40	Arrived at Station 237